

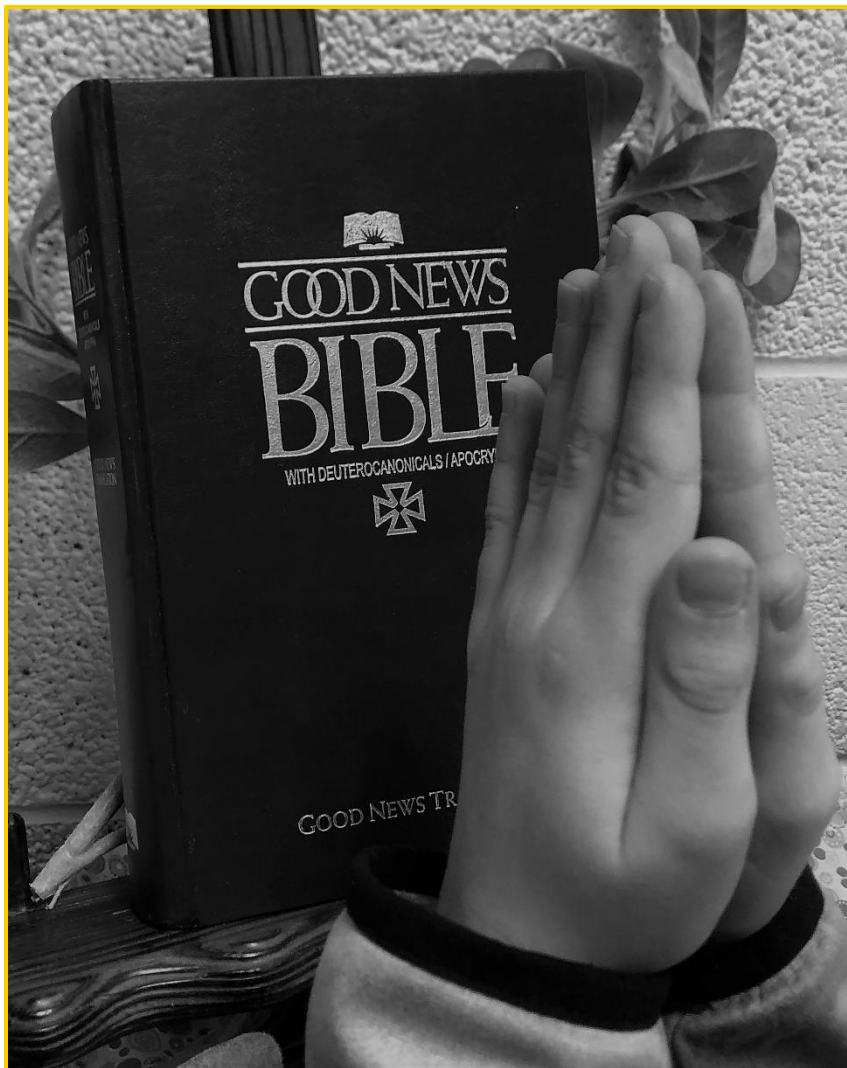


Shelby County Catholic School Annual Report

2020-2021

Shelby County Catholic School; 2005 College Place; Harlan, IA 51537

www.shelcocath.pvt.k12.ia.us



Mission Statement

Shelby County Catholic School, growing in faith with Jesus, is a family-oriented school dedicated to academic excellence.



Dear Friends and Families of Shelby County Catholic School,

As we reflect upon our school year here at Shelby County Catholic School, we realize what a blessing we have been given in our students, our families, our parishes, and our supporters. Since the first Catholic school opened at St. Boniface in Westphalia in 1884, Catholic education in Shelby County has been a cherished tradition. While Catholic education has seen many changes throughout the years, the one thing that hasn't changed is the educating of our children with the same faith, vision, and values as the generations that came before us. Our faculty and staff strive to help our students and families find God in all circumstances and to encourage the Christian attitude that is important to us as followers of Christ.

Our students perform and do well academically as is shown by test scores and by their successes as they leave our school beyond 5th grade. Our small class sizes and family-like environment allow our students to receive individualized attention and more opportunities to develop good character and leadership skills. In addition to academics, our students are also surrounded by the teachings of Jesus each and every day. The students gather to celebrate Mass, to participate in special prayer services, to pray for people in our community, and to help others through a variety of service projects.

For over 135 years, there has been a Catholic school in Shelby County. This tradition has continued because of the commitment of people who truly believe in the importance of Catholic education. Many thanks go out to all of you who support Shelby County Catholic School in so many different ways. As the old saying goes, "It takes a village to raise a child," and we are blessed to have all of you as part of our village. May God continue to bless you for making a difference in the lives of our children.

Blessings & Peace,
Ann Andersen, Principal



Our History



St. Boniface, Westphalia
1884 - 1978



St. Joseph, Earling
1886 - 2004



St. Michael, Harlan
1954 - 2004

Shelby County Catholic
School – serving all six
parishes
2004 - Present



St. Mary, Portsmouth
1894 - 1978



St. Paul, Defiance
1913 - 1978



St. Mary, Panama
1911- 2004

Now *faith* is confidence in what we hope for and assurance about what we do not see.

Hebrews 11:1



At Shelby County Catholic School, our students grow spiritually as they encounter Christ each and every day. Through a Catholic, faith-based education, we strive to prepare our students to become disciples of Christ in an ever-challenging world. Teachers incorporate faith into the classrooms and across the curriculum, and students participate in various faith-based activities.

Our school provides opportunities for students to experience and express their faith through music, art, and prayer. Each child, regardless of religious tradition, has the opportunity to participate in prayer and worship. Younger and older students are joined into faith teams to participate in prayer, community-building activities, and service projects.



The school has created a partnership with our parishes by creating a prayer partner program. Each one of our students is partnered with a parishioner from one of our six parishes. Prayer partners pray for each other, write letters to each other, celebrate Mass together, and support each other in faith.



Our sacramental preparation program prepares our second graders to receive First Reconciliation and First Communion. We work closely with each one of our parishes to coordinate these sacramental celebrations. Our parish priests provide reconciliation opportunities for our older students while also supporting our teachers in teaching about Sacred Scripture and the traditions of the Church.

"What return can I make to the Lord for all the Lord has given me?" Psalm 16:12

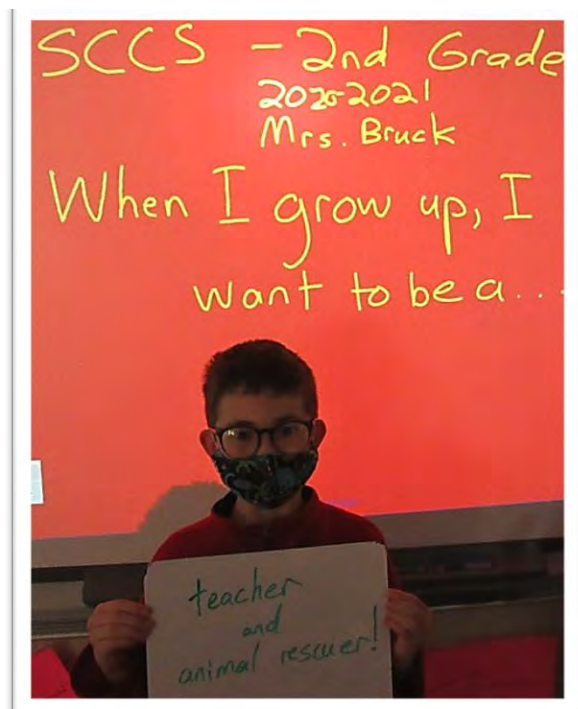
Train up a child in the way he should go, and when he is old he will not depart from it. Proverbs 22:6

2020 - 2021
Challenges
Highlights
Opportunities



After shutting our doors to in-person learning in March 2020 due to the COVID pandemic, we opened our doors back up in August 2020 to start a new school year. Students, parents, and school staff began the school year apprehensively not knowing what the year would bring. Extra cleaning and disinfecting protocols were put in place. Students and staff wore face coverings and practiced physical distancing. School liturgies looked different with students sitting six feet apart, school lunch looked different with students not able to sit together, and many of our usual school activities were put on hold. Students, staff, and parents remained vigilant in keeping everyone healthy, so our school doors could remain open for in-person learning.

Our teachers worked diligently to challenge the students academically. Our students showed tremendous resiliency as they adapted to all the changes brought on by the pandemic. Teachers and students both worked hard to keep learning. The hard work paid off as our end-of-the-year assessments showed our students made incredible growth in reading and math.



Curriculum & Activities

- Accelerated Math
- Small Reading Groups
- Enrichment Activities
- Technology
- STEM
- Agriculture Literacy
- Conservation Education
- Health & Wellness Activities
- Drama Club
- Music
- Art
- Wildcat Teams
- Band (partnered with our public school)
- Catholic Daughters Essay Contest
- Soil Conservation Contest
- Fire Safety Contest



Service Projects

- *Food Pantry
- *Adopt-a-Family
- *Socks for Shelters
- *Prayer Partner Program
- *Blankets for Project Linus
- *Items for our local Learning for Life Program
- *Prayer Cards & Letters to shut-ins



The 2020-2021 school year was the first year our third, fourth, and fifth graders completed the Iowa Statewide Assessment of Student Progress (ISASP). The ISASP is aligned with the Iowa Core Learning Standards. Third and fourth grade students are assessed in reading, writing, language (English Language Arts), and math. Fifth grade students are assessed in English Language Arts, math, and science. The results below show the percentage of our students who are proficient in each area.

*Proficiency scores were obtained from the ISASP District Achievement Level Summary Report.

English Language Arts

Grade	SCCS Students Proficient	State of Iowa Students Proficient
3	100%	50%
4	85%	74%
5	91%	66%



Math

Grade	SCCS Students Proficient	State of Iowa Students Proficient
3	100%	71%
4	100%	67%
5	96%	63%



Science

Grade	SCCS Students Proficient	State of Iowa Students Proficient
5	82%	54%



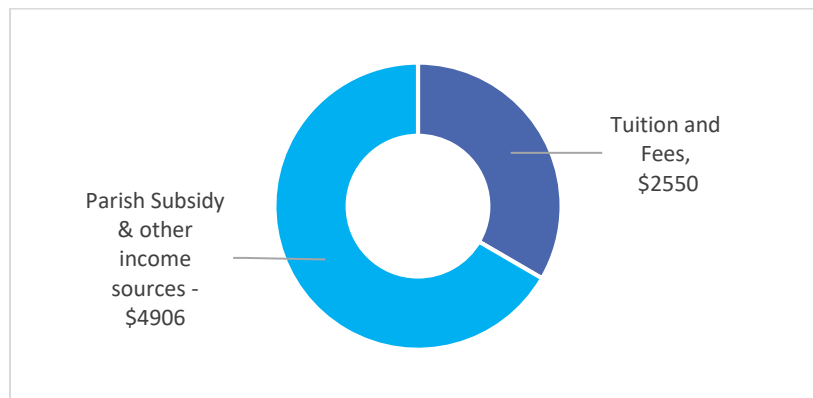
The Cost of Educating Shelby County Catholic School Students

We recognize the financial sacrifice our families make to ensure their children receive a faith-based, quality education at SCCS. The tuition our families pay only covers a portion of the cost to educate a student at our school. The remaining amount is supported by parish subsidy, fundraising, private donations, tuition assistance resources, and grants.

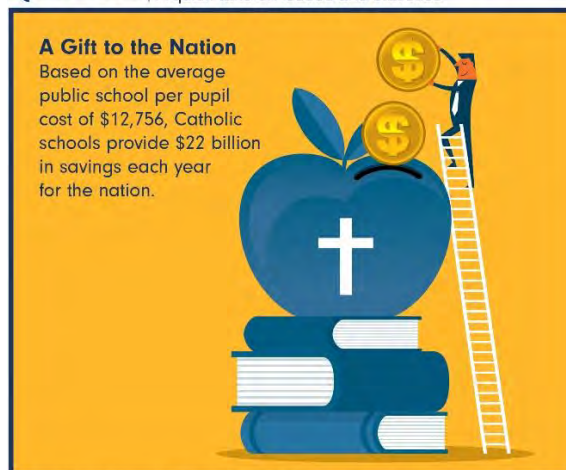
In 2020-2021, 55% of our students received tuition assistance from the Catholic Tuition Organization and local tuition assistance resources totaling over \$37,000.

SCCS Tuition and Cost to Educate:

- Per Student Cost to Educate = \$7456.00
- Tuition/Fees = \$2550.00
- Parish Subsidy and other income sources = \$4906.00



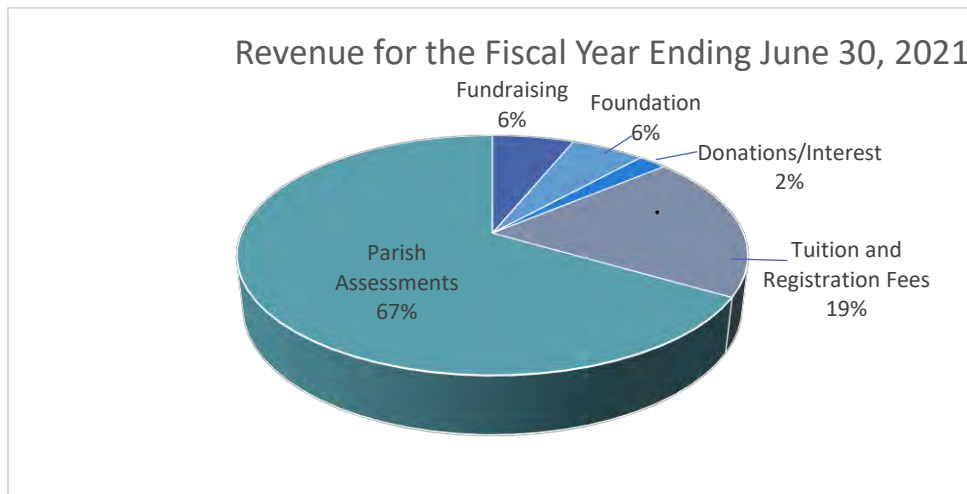
CATHOLIC SCHOOLS SNAPS A quick take on issues and statistics



Sources: Gray, M.M., and McDonald, D. (2019), Education Week. (2020).

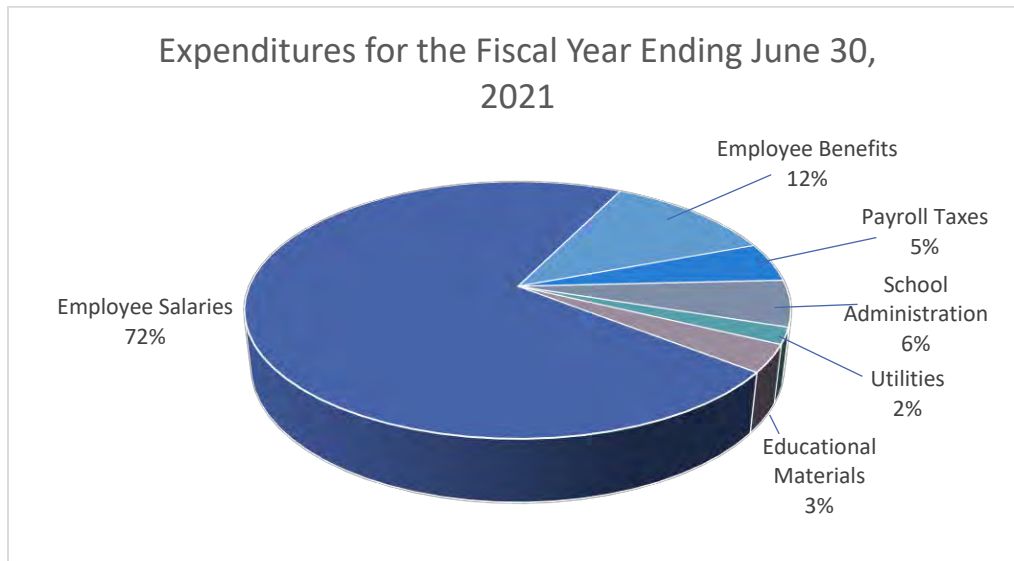
Financial Data

Income Sources



Fundraising	\$44,579.94	6%	Tuition/Fees	\$141,049.14	19%
Foundation	\$ 40,000.00	6%	Parish Assessments	\$480,825.37	67%
Donations/Interest	\$15,607.03	2%	Total Revenue	\$ 722,061.48	

Expenses



Employee Salaries	\$535,151.54	72%	Utilities	\$15,365.00	2%
Employee Benefits	\$ 89,358.66	12%	Educational Materials	\$25,708.22	3%
Payroll Taxes	\$ 36,611.40	5%	Total Expenditures	\$745,622.77	
School Administration	\$ 43,427.95	6%			